



# **INTRACOM**

## **T E L E C O M**

Technology Shaping the Future

## **A Holistic Approach in Implementation of Sustainable Smart Applications**

**Manthos Papamatthaiou**  
Senior Product Marketing Engineer  
Services Business Division





An aerial night view of a city skyline, likely Chicago, with numerous skyscrapers and buildings illuminated. The image has a strong red overlay, giving it a fiery or sunset-like appearance. The text is overlaid on the top half of the image.

# We envisage

a smarter connected world where innovative technologies enable life improving services.

# Transforming Smart into Genius





Cross-Domain  
Apps enablement



Unified control &  
Monetization



Cloud  
Assurance



A Smart City with an autonomous, **secure**, user friendly and low cost **“connected” infrastructure** to provide **targeted** services in real time.

Replacement of legacy lighting with **advanced energy efficient LED** to reduce energy & maintenance **costs**, and increase illumination **quality** through:

- ▶ Intelligent on/off switching - calendar based **dimming**
- ▶ Remote Lighting Management
- ▶ Targeted dimming (event driven)
- ▶ Optimum energy management
- ▶ Preventive maintenance based on analytics



Case study in Greek municipality, replacement of 15.000 Street lights

Energy consumption Before (kWh)	Energy consumption After (kWh)	Energy reduction in 12 years on average
49.455.316	12.043.074	75.65%

Energy reduction

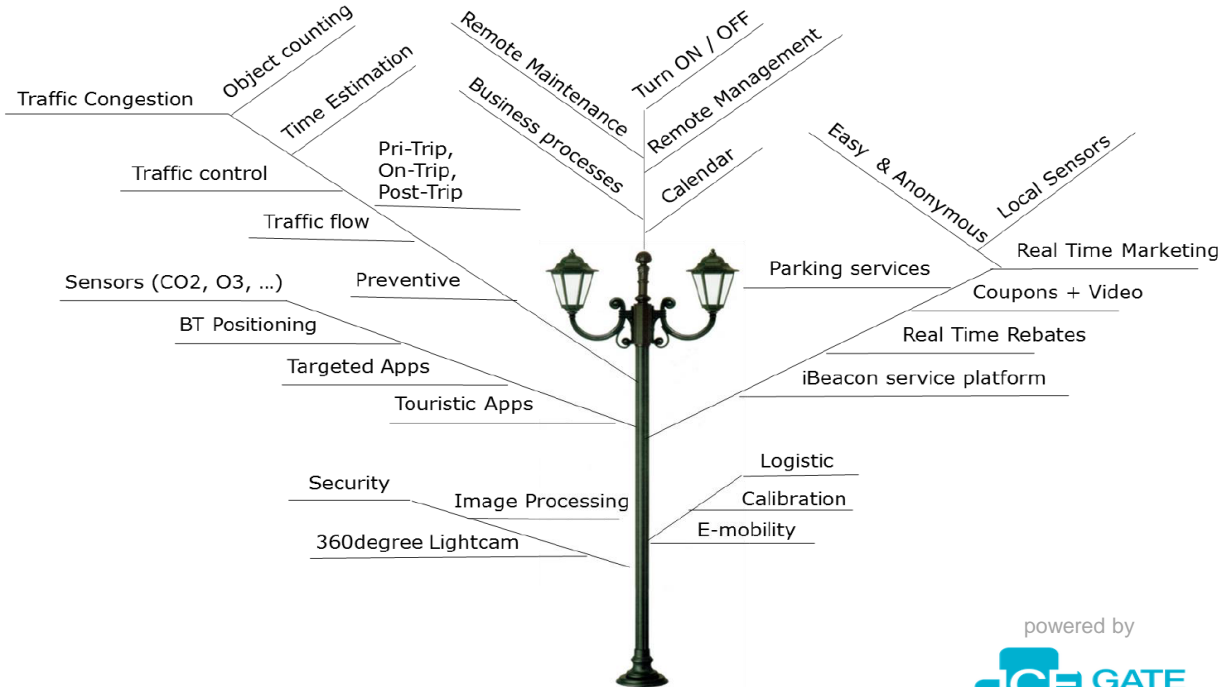


CO <sub>2</sub> emissions Before (tonnes)	CO <sub>2</sub> emissions After (tonnes)	CO <sub>2</sub> emissions Reduction in 12y (tonnes)	CO <sub>2</sub> emissions Reduction (%)
56.824	13.838	42.987	75.65%

CO<sub>2</sub> emissions

## The core network to develop smart cities & IoT solutions

- ❖ Wi-Fi hotspots
- ❖ Location Based Content Push
- ❖ People Counting/Traffic Flow
- ❖ Traffic Monitoring
- ❖ Parking Sensors
- ❖ Public Safety - SOS Button
- ❖ Remote Area Surveillance
- ❖ Air quality & Noise Sensors

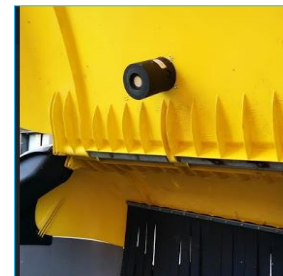
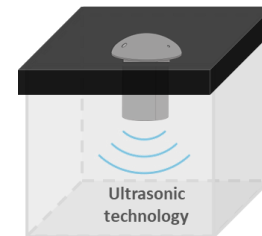


- ▶ City authorities **alerted** for waste collection.
- ▶ **Effective waste management** in touristic and VIP areas
- ▶ Adaptive collection **route planning**
  - ▶ **Clean** urban environment
  - ▶ **Traffic** minimization
  - ▶ Emissions, maintenance & labor **reduction**



## Waste sensors

- ▶ Ultrasonic technology compatible with all types of waste (e.g.: plastic, paper, clothes, oil, mixed, etc)
- ▶ Easy installation (on lid)
- ▶ Wireless Connectivity: 3G/4G, Zigbee, LoRa, NB-IoT
- ▶ Long Battery Life, typical 7-10 years
- ▶ Robust Design, IP67, IK10
- ▶ Operating Conditions: -20°C to 70°C
- ▶ Sampling Rate: configurable (20 min default)



- ▶ Wireless and autonomous Parking sensors
- ▶ Magnetic & Ultrasonic technologies
- ▶ Real time
  - Detection of the entrance and exit of vehicles
  - Parking spaces **availability** awareness
  - Customized control/view of parking spaces
- ▶ Parking time infraction detection and notification
- ▶ Customized **statistics** and reports
- ▶ Advanced **payment** methods (station, mobile app, voucher)



## Parking Sensors

- ▶ Magnetic / ultrasonic technology
- ▶ Easy installation (in asphalt / on poles)
- ▶ Wireless Connectivity: Zigbee, LoRa, NB-IoT
- ▶ Long Battery Life – typical 10 years lifetime
- ▶ Robust Design, IP67, IK10, 1.500kg pressure resistance
- ▶ Operating Conditions: -33°C to 65°C
- ▶ Sampling Rate: configurable (10 seconds default)
- ▶ Indoor & Outdoor solutions





- ▶ Top **quality** cameras
- ▶ Embedded CPUs – Local processing
- ▶ **Reliable** detection
- ▶ **Integration** with 3<sup>rd</sup> party
- ▶ **ANPR** option
- ▶ **Outdoor & Indoor** use

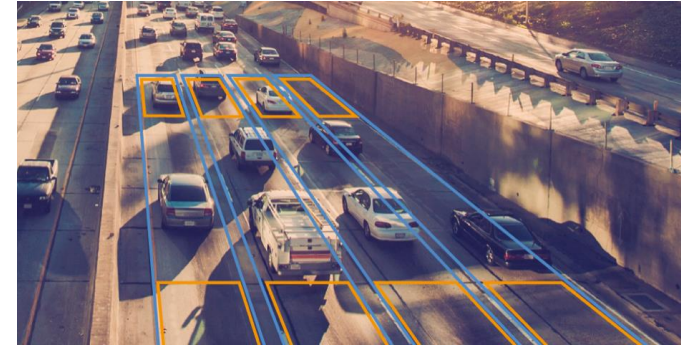




- ▶ Anonymous **Traffic counting** with **Ultrasonic** technology
- ▶ **Traffic flow** monitoring – no privacy violation
- ▶ **People counting** using Bluetooth / Wi-Fi
- ▶ **Objects classification** and **decision** making using machine learning
- ▶ Security on fence



- ▶ Top **quality** cameras
- ▶ Embedded CPUs – Local processing
- ▶ Anonymous **traffic counting**
- ▶ Speeding & red light **violation detection**
- ▶ **Traffic** flow heat maps
- ▶ **Objects classification**
- ▶ **ANPR** option



Detection and counting

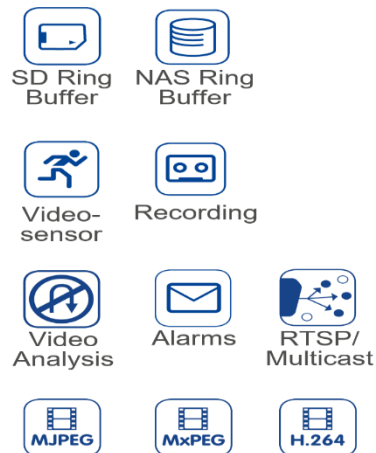


Heat map creation



## Features

- ▶ Indoor & outdoor applications
- ▶ High reliability – no moving parts
- ▶ Video analytics
- ▶ Face & plate recognition
- ▶ Decentralized, local processing
- ▶ Encrypted & secure
- ▶ Low power consumption
- ▶ Image processing (rain, shaking)



## Applications

- ▶ Intrusion Detection
- ▶ Fire detection (thermal)
- ▶ Equipment fatigue detection (thermal)
- ▶ Facial recognition – access control
- ▶ Traffic analysis
- ▶ Left Object Detection

**Conventional**



**Thermal**



**360° hemispheric**





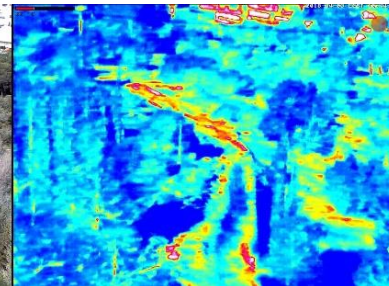
# Smart Surveillance & Fire Detection Use Case



**INTRACOM**  
TELECOM

## Fire Detection

- ▶ Forest area 24/7 monitoring
- ▶ **Thermal** Cameras: 5mK accuracy
- ▶ Detection capability:  
32cm heat source at 350m
- ▶ No live feed – **no privacy issues**
- ▶ Wireless link: Intracom ® Streetnode
- ▶ Automatic sprinklers activation
- ▶ Bidirectional audio functionality



Thermal image

Watch Pole

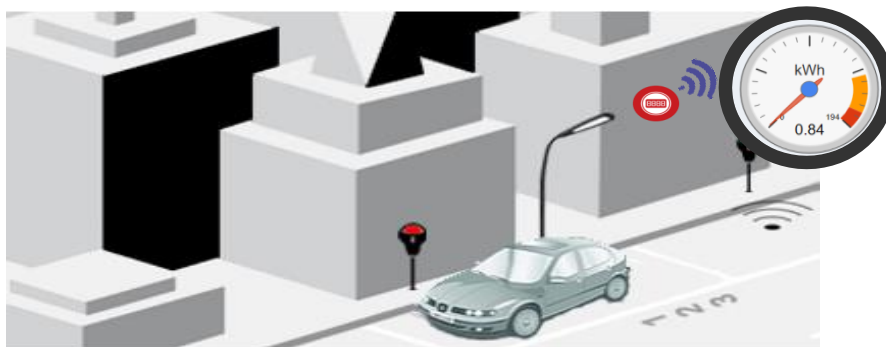


Wide angle hillside coverage

powered by

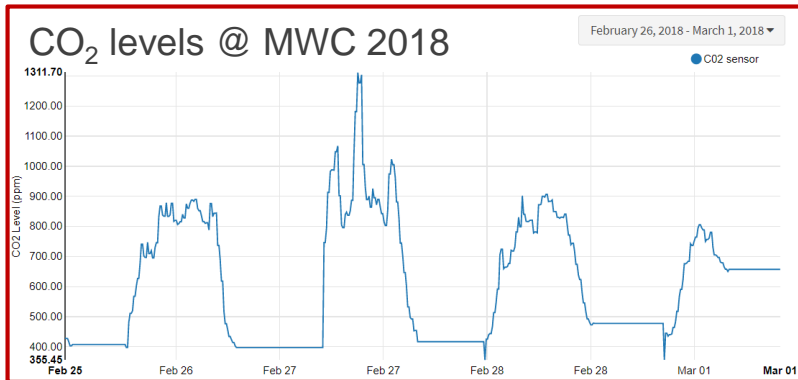


- ▶ Energy & water consumption **monitoring** in near real time
- ▶ **Alarms** can be triggered when
  - ▶ consumption reaches a predefined threshold limit
  - ▶ the calculated expenses are about to reach a limit
- ▶ Customized **statistics** and reports



Monitoring allowing for:

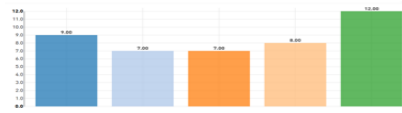
- ▶ Resource and cost savings, minimizing GH emissions
- ▶ Detection of consumption abnormalities by analytics (e.g. leaks, fraud)
- ▶ Support in optimizing distribution at city level



## Environmental Conditions monitoring and Smart apps

- ▶ Easy installation in current urban infrastructure
- ▶ Real Time information on City map
- ▶ Grouping and smart rules engine
- ▶ Measurements of pollutants concentration, temperature, humidity, irradiation etc
- ▶ Dashboards presenting measurements and advanced reports
- ▶ Alarms & Notifications
- ▶ Emergency situation alert





## Noise/Sound Smart app:

- ▶ Real Time information on City map
- ▶ Dashboards presenting the noise level
- ▶ EU defined Noise Levels calculated (KPIs – e.g.  $L_{den}$ )
- ▶ Automatic notifications sent to Authorities when noise limits reached or patterns identified

## Actions taken

- ▶ Sound to image correlation
- ▶ Public Transportation plan improvement to reduce Traffic Noise Center
- ▶ Security dispatch – GPS location reported

Fast actions & identification of emergency and catastrophic situations

Quality of life

# A comprehensive approach to Smart City



Unified IoT services Orchestration Platform

- Smart Lighting

Smart Parking

Waste Mgt

Noise Monitoring

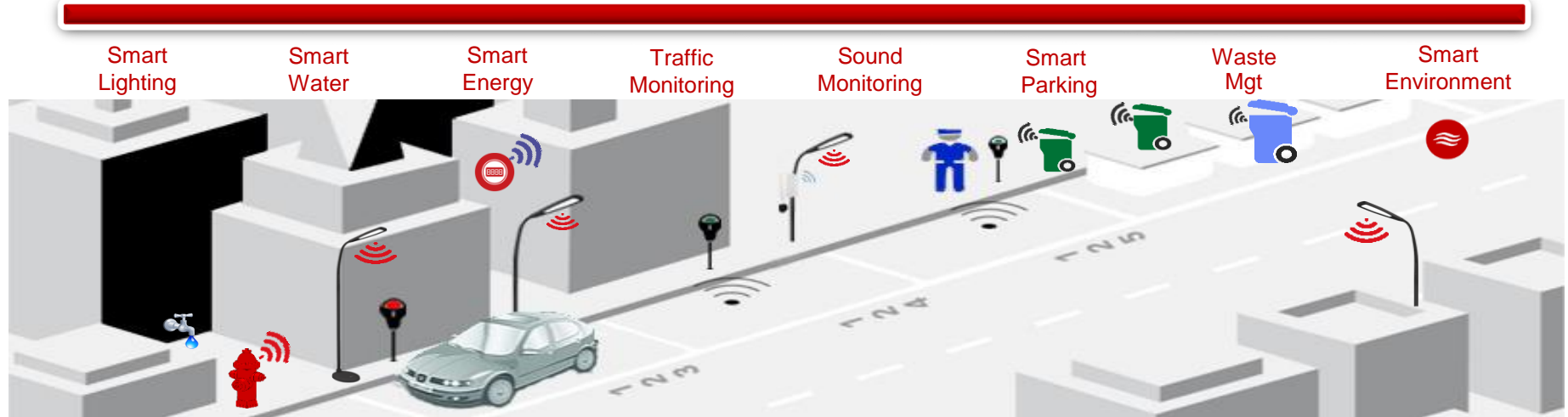
Energy Mgt

Water Mgt
- Traffic Monitoring


Environmental Mgt

Content push

SOS Button
- Smart apps



# uiTOP: Unified Smart City overview

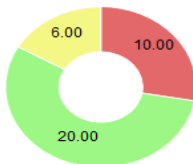
 Total Command & Control Environment for Smart City Applications and Services


Waste Filling Level



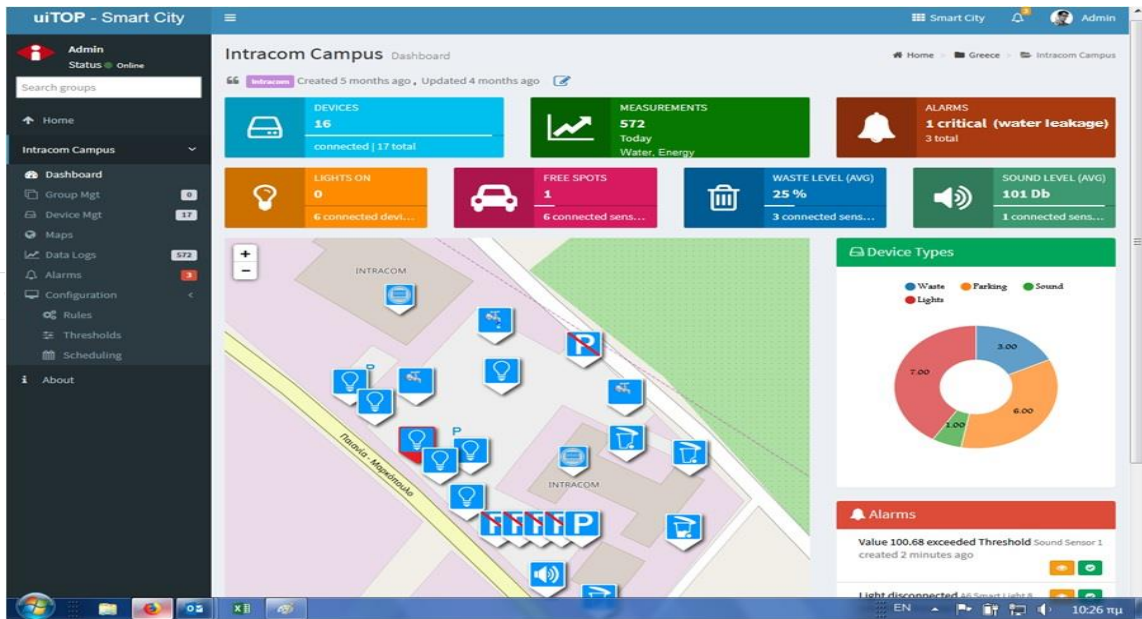
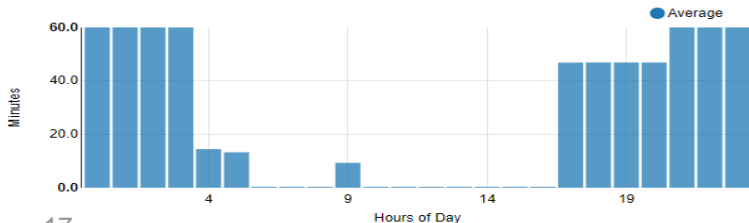
Lights Lifespan

● <1000 ● >10000  
● 10000<=1000

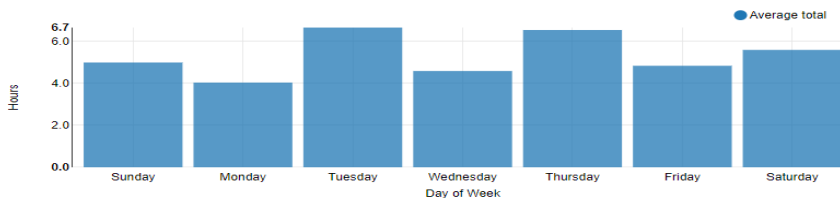


 Aggregated information in insightful dashboards with powerful Analytics capabilities

Light hour consumption



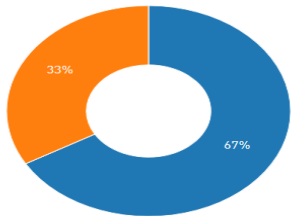
Popular day of week





# uiTOP: Centralized control of Smart City

- Custom Dashboards
- Custom Alarms and notifications
- Custom consolidated Map creation



Value 63.0 exceeded Threshold	Sound Sensor 1	created 28 days ago	Clear
Light disconnected	ICE-006-000-000-007	created 23 days ago	Ack
Light disconnected	ICE-006-000-000-002	created 23 days ago	Ack
Light disconnected	ICE-006-000-000-008	created 23 days ago	Ack




**DEVICES**  
**45**  
connected | 55 total







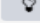

**ALARMS**  
**1 critical**  
3 total

**Dim Action**



Devices

Groups

<input type="checkbox"/>	A6 Smart Light 1	
<input checked="" type="checkbox"/>	A6 Smart Light 2	 0 %
<input type="checkbox"/>	A6 Smart Light 3	 0 %
<input type="checkbox"/>	A6 Smart Light 4	 0 %
<input checked="" type="checkbox"/>	A6 Smart Light 5	 0 %
<input type="checkbox"/>	A6 Smart Light 6	

1 - 6 of 34

«

1

2

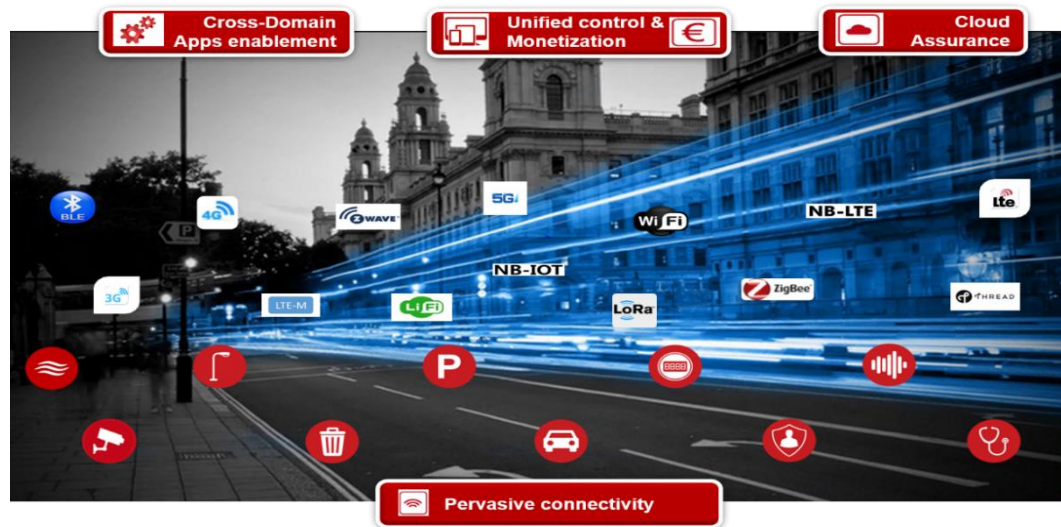
3

4

5

»

- Deployment of **Large scale, e2e, Smart Metering** projects in Energy & Utilities
- Pilot Smart City projects:** Smart Lighting, Smart Parking, Traffic Monitoring, Public WiFi and Beacon services
- Deployment of IoT gateway for connectivity monitoring in smart meter project
- Cross-domain solutions** combining Waste Management, Sound monitoring and Smart Parking



- ❖ e2e Solution with **Unified** City management and control
- ❖ Decoupling business from technology- No Device **vendor lock** - Multiple Connectivity options
- ❖ Ready to accommodate new Smart apps and devices – cross domain apps enablement
- ❖ **Scalability** to match increasing demands of IoT expansion
- ❖ Fully **customizable** to address specific City needs
- ❖ New business models and **monetization** options
- ❖ **Core and optional** modules – option to **integrate** the solution in existing IoT ecosystems





- ❖ Comprehensive portfolio of **own** products complemented with **strong** delivery capabilities
- ❖ Strong expertise in **key technological** areas of:
  - ▶ IoT enablement and monetization
  - ▶ Energy Utilities and Smart Cities
  - ▶ IoT analytics & Data monetization
  - ▶ Network Function Virtualization & High Performance Computing
- ❖ Significant in-house **experience** in all aspects of O/BSS “best-of-breed” systems design, implementation, integration & support
- ❖ Thorough experience of Telco and IoT business models



# thank you

For more information, visit  
[www.intracom-telecom.com](http://www.intracom-telecom.com)



[SmarterCity@intracom-telecom.com](mailto:SmarterCity@intracom-telecom.com)



**INTRACOM**  
TELECOM

Follow



Link



Watch



**Manthos Papamatthaiou**  
Senior Product Marketing Engineer  
Services Business Division